

HB1119: Election Law - *Polling Places and Early Voting Centers – Aerial Pictures of Electioneering Boundary*

MARCH 8, 2022

WAYS AND MEANS COMMITTEE

DELEGATE NEIL PARROTT



Problem:

- During elections, volunteers need to place signs and support their candidates at polling places
- The election boundary can sometimes be difficult to determine.
- Most campaigns put out the signs at night or in the early morning before the polls open. There are often no markers to determine where the entrance is or where signs can be placed

Problem:

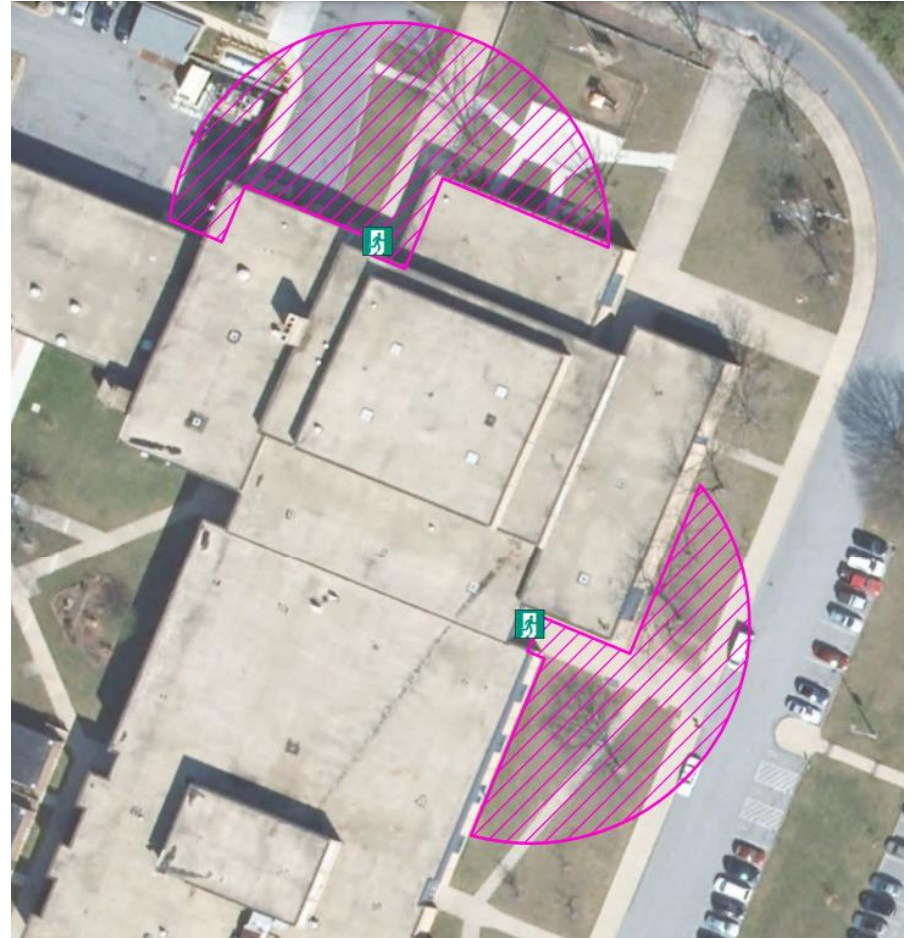
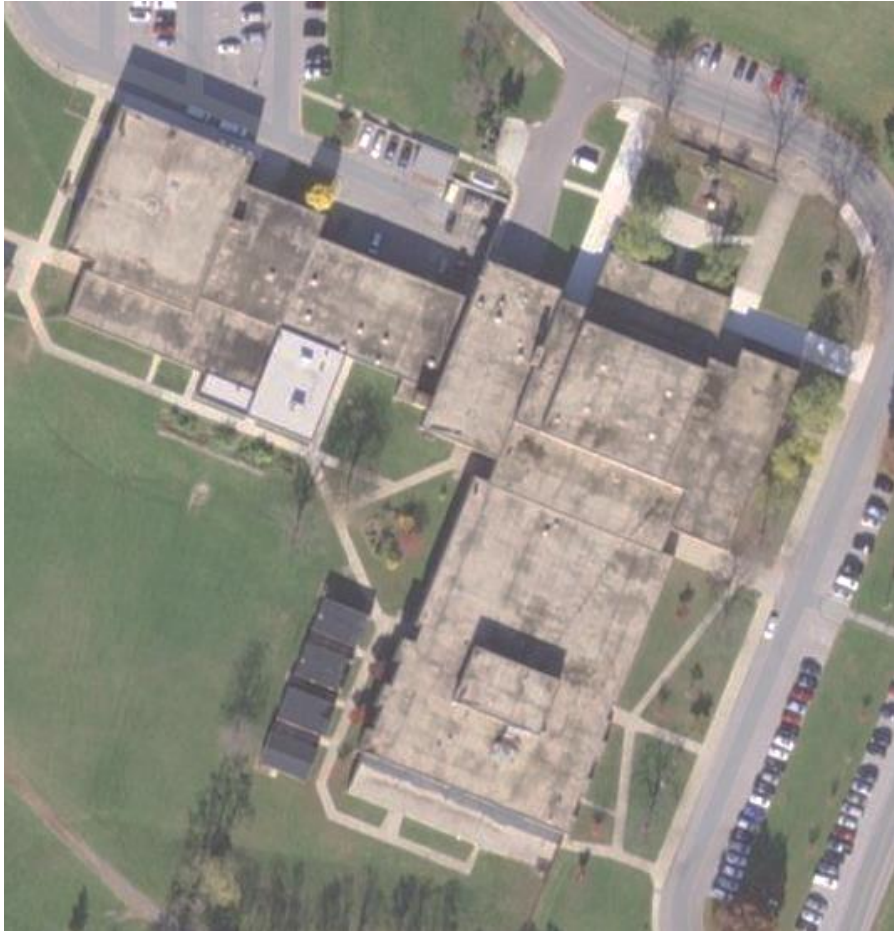
- Candidates and volunteers end up:
 - Placing signs too close/ too far from the polling place
 - Supporting their candidates at the wrong entrance
 - having signs thrown away due to improper placement
- Voters may not know where to enter the building to vote:
 - Where is the polling entrance in this building? →



Williamsport High School
Polling Location for district-precinct 02-000

Luckily, there is an easy solution:

Mark the line where the electioneering boundary is located



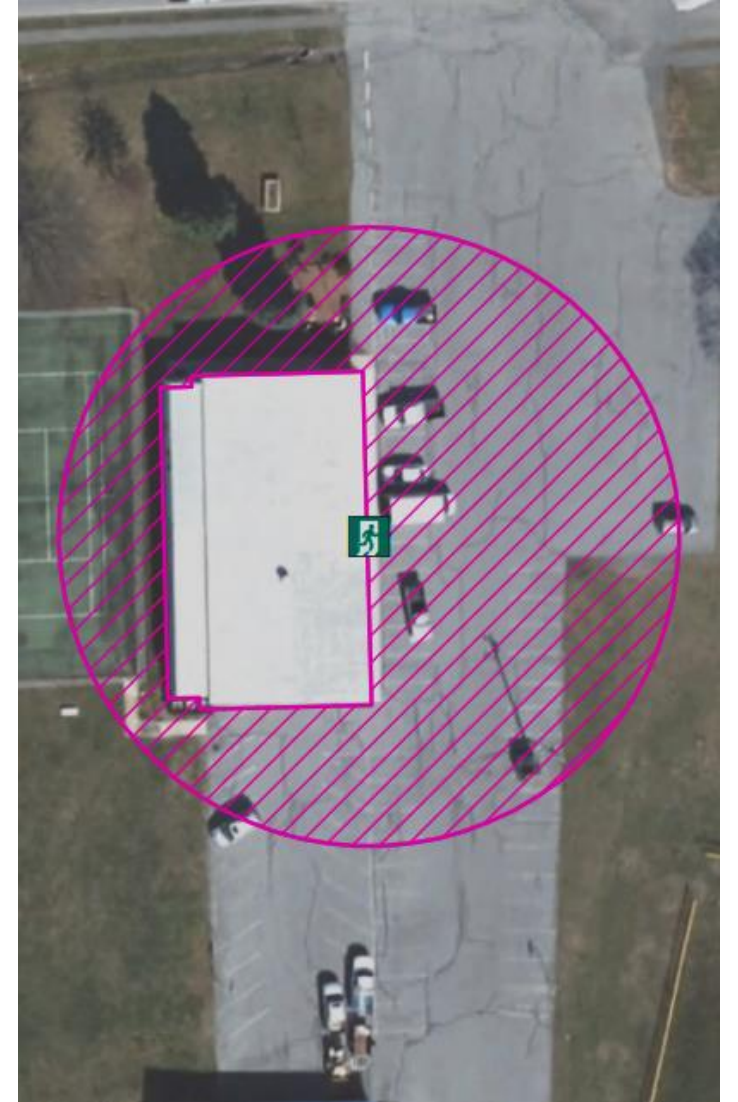
Washington County Board of Elections started this process

- Election Boundaries are easily seen on the aerial photograph →
- 100 polling places have been mapped



What this bill does:

- Requires the State Board of Elections and each local Board of Elections to post aerial pictures of each polling place on their websites
- The photographs need to include a boundary line where the electioneering boundary is located
- Defines clear and concise voting locations



Benefits of the bill

- Voters would know where to go to vote
- Candidates would know where to place signs at all polling locations
- Providing these maps would eliminate confusion and create an equal playing field for all candidates, even those unfamiliar with the polling locations

Please vote yes on HB 1119

Questions?